

RENOVATION AND RENEWAL OF THE FELLOWSHIP HALL BUILDING

AT

BROWN MEMORIAL PARK AVENUE PRESBYTERIAN CHURCH

BALTIMORE, MARYLAND

JUNE 4, 2017



PRIMARY GOALS & OBJECTIVES:

- **ACCESSIBILITY**

- Elevator
- New Toilet Rooms

- **SAFETY**

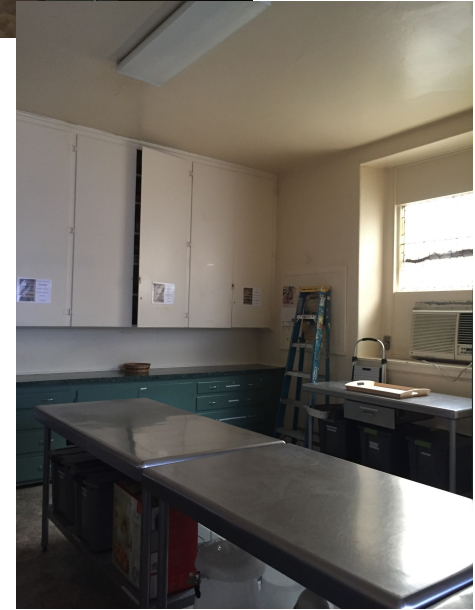
- South Tower Interior Repairs
- Repointing of exterior of South Tower

- **USABILITY**

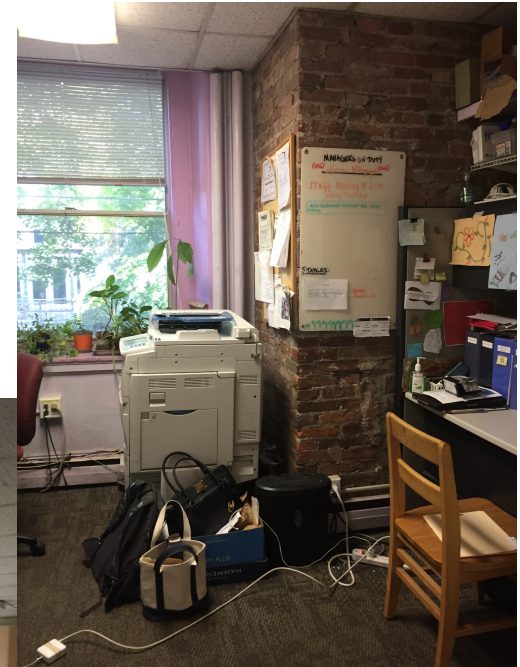
- Upgrade Kitchen & Assembly Room
- Repurposing Of Second Floor
- Third Floor Tutoring Center Improvements
- New Toilet Rooms
- Improve Overall Aesthetics & Building Systems

EXISTING BUILDING CONDITIONS

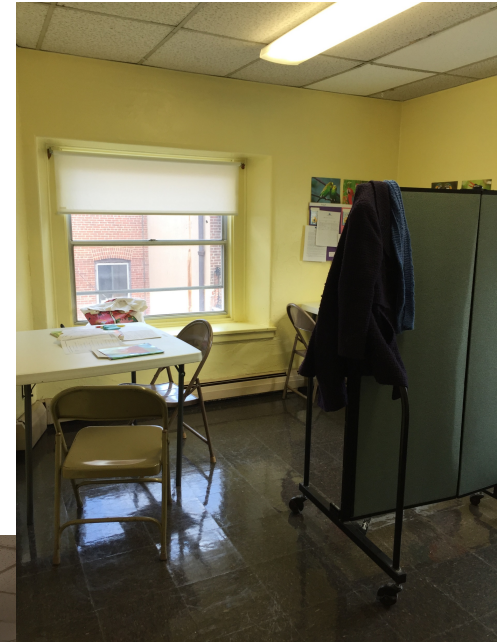
EXISTING BUILDING CONDITIONS – FIRST FLOOR



EXISTING BUILDING CONDITIONS – SECOND FLOOR



EXISTING BUILDING CONDITIONS – THIRD FLOOR

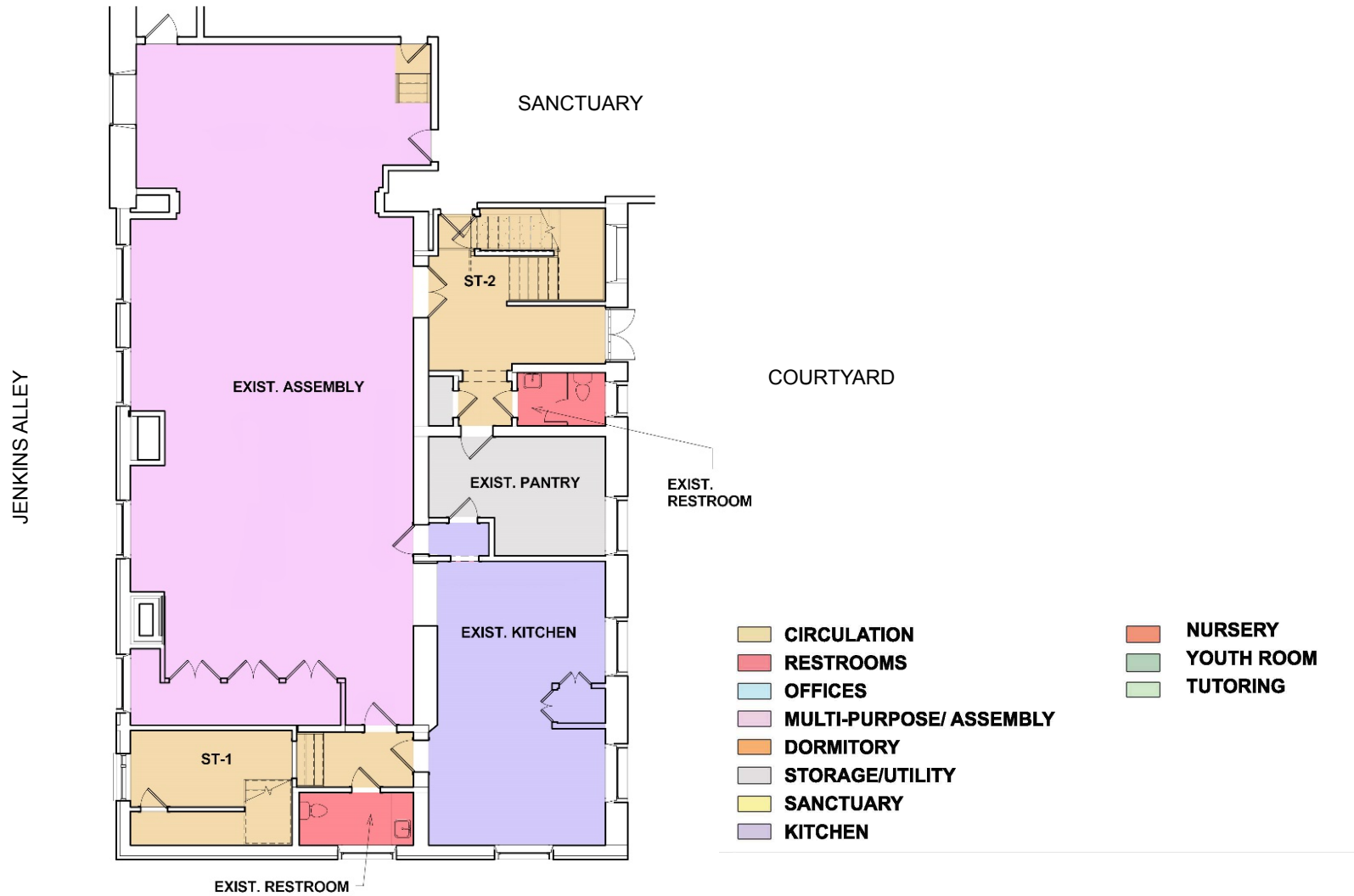


EXISTING BUILDING CONDITIONS

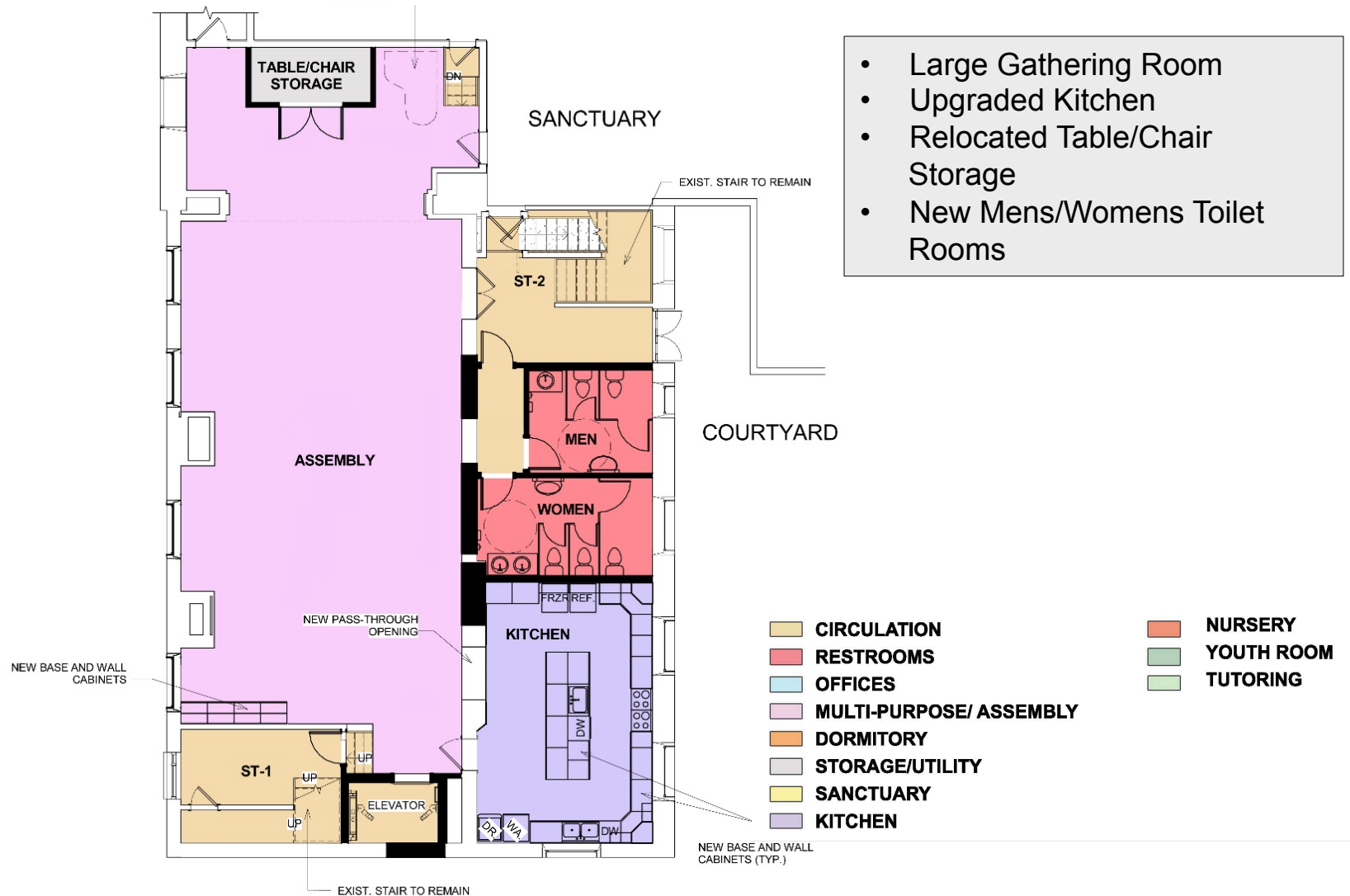


PROPOSED BUILDING RENOVATIONS

EXISTING FIRST FLOOR PLAN



NEW FIRST FLOOR PLAN



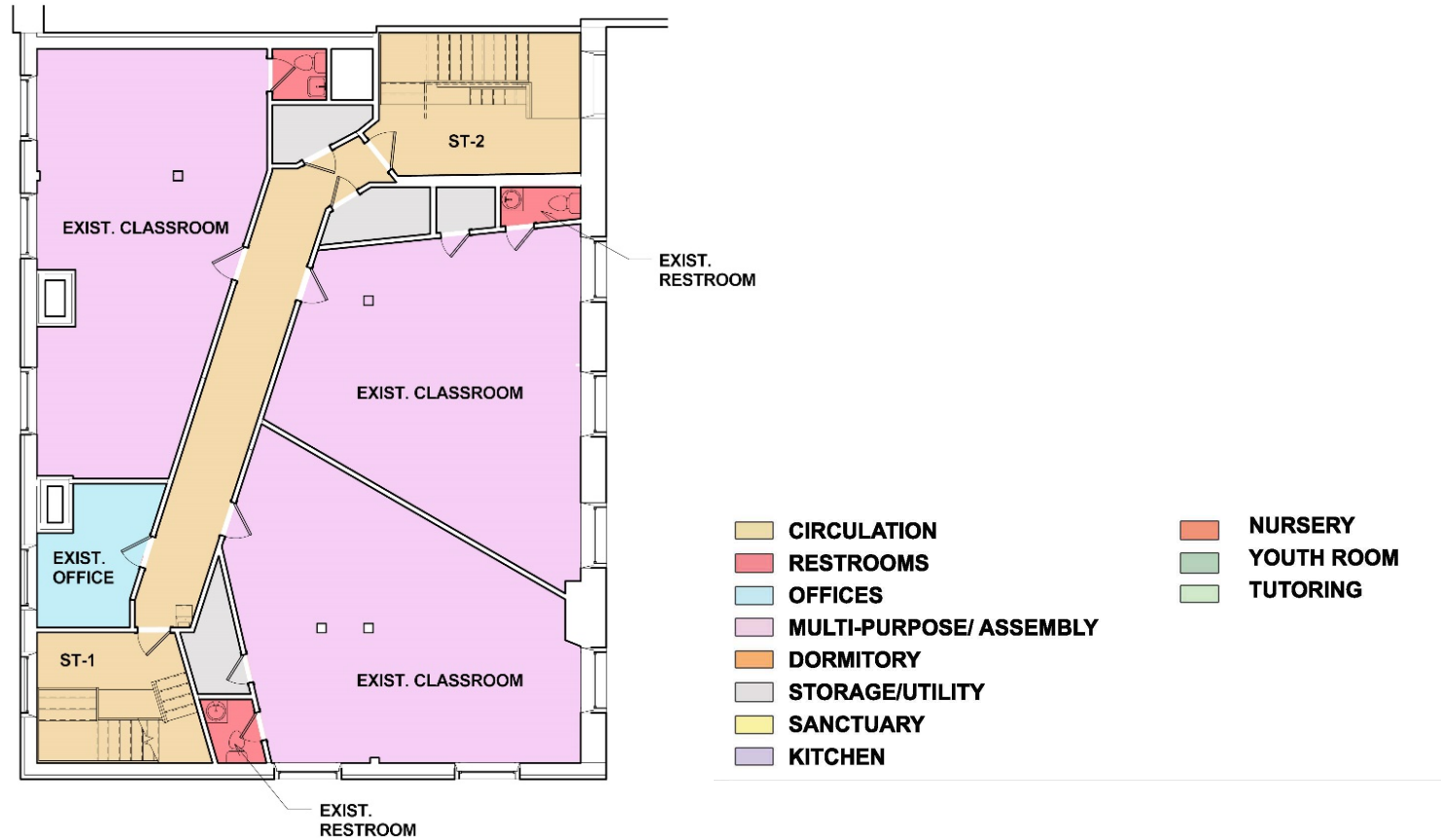
BROWN MEMORIAL PARK AVENUE PRESBYTERIAN CHURCH

FIRST FLOOR ASSEMBLY ROOM

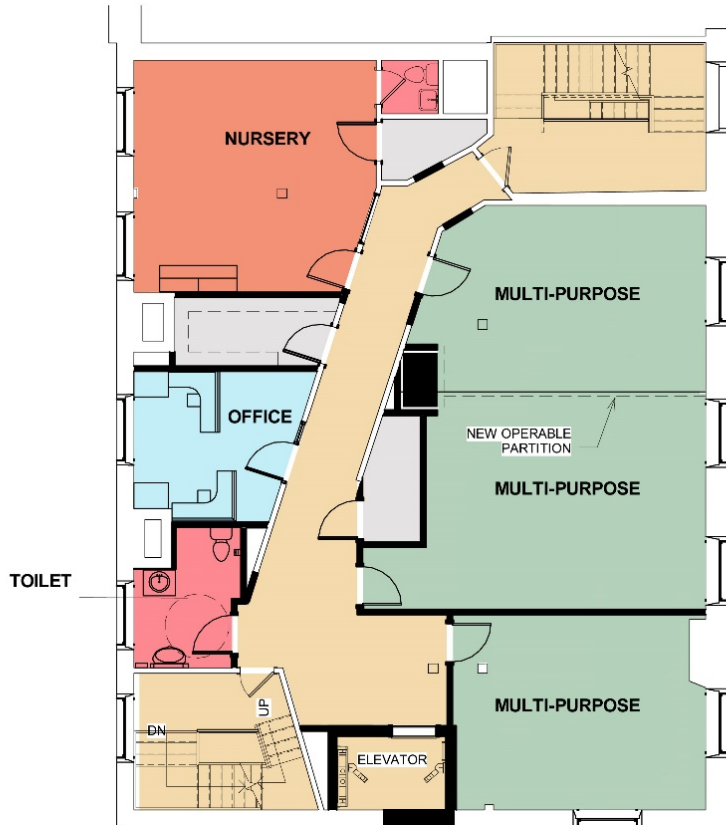


BROWN MEMORIAL PARK AVENUE PRESBYTERIAN CHURCH

EXISTING SECOND FLOOR PLAN



NEW SECOND FLOOR PLAN



- 3 Multi-purpose Rooms
- Dedicated Nursery
- Flexible Office Space
- ADA-Compliant Toilet Room
- Storage

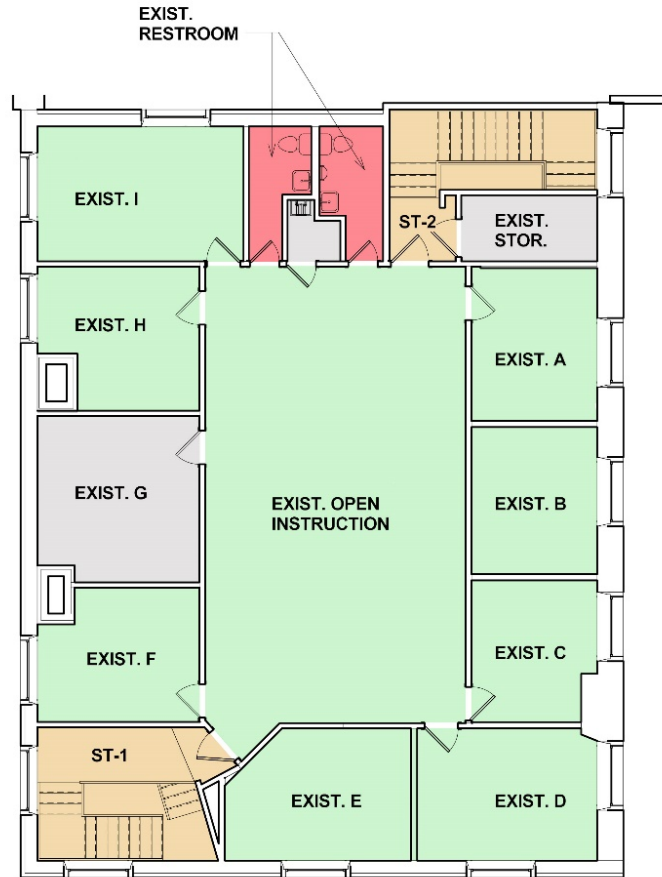
CIRCULATION
RESTROOMS
OFFICES
MULTI-PURPOSE/ ASSEMBLY
DORMITORY
STORAGE/UTILITY
SANCTUARY
KITCHEN

NURSERY
YOUTH ROOM
TUTORING

SECOND FLOOR MEETING ROOM



EXISTING THIRD FLOOR PLAN



- CIRCULATION
- RESTROOMS
- OFFICES
- MULTI-PURPOSE/ ASSEMBLY
- DORMITORY
- STORAGE/UTILITY
- SANCTUARY
- KITCHEN

- NURSERY
- YOUTH ROOM
- TUTORING

BROWN MEMORIAL PARK AVENUE PRESBYTERIAN CHURCH

NEW THIRD FLOOR PLAN



Tutoring Center:

- Gathering Space
- Library
- 8 Tutoring Rooms
- ADA-compliant Toilet Room
- Kitchenette
- Resource Room

- CIRCULATION
- RESTROOMS
- OFFICES
- MULTI-PURPOSE/ ASSEMBLY
- DORMITORY
- STORAGE/UTILITY
- SANCTUARY
- KITCHEN

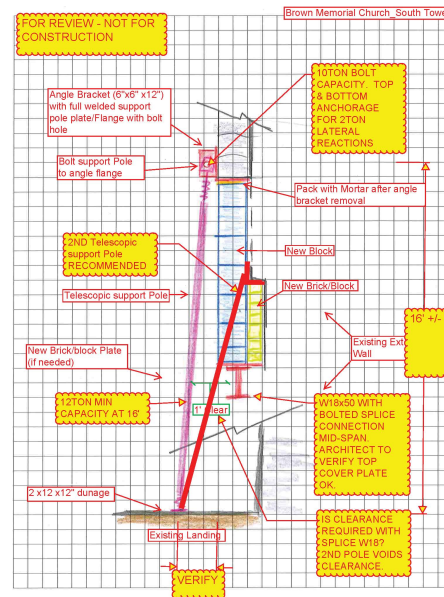
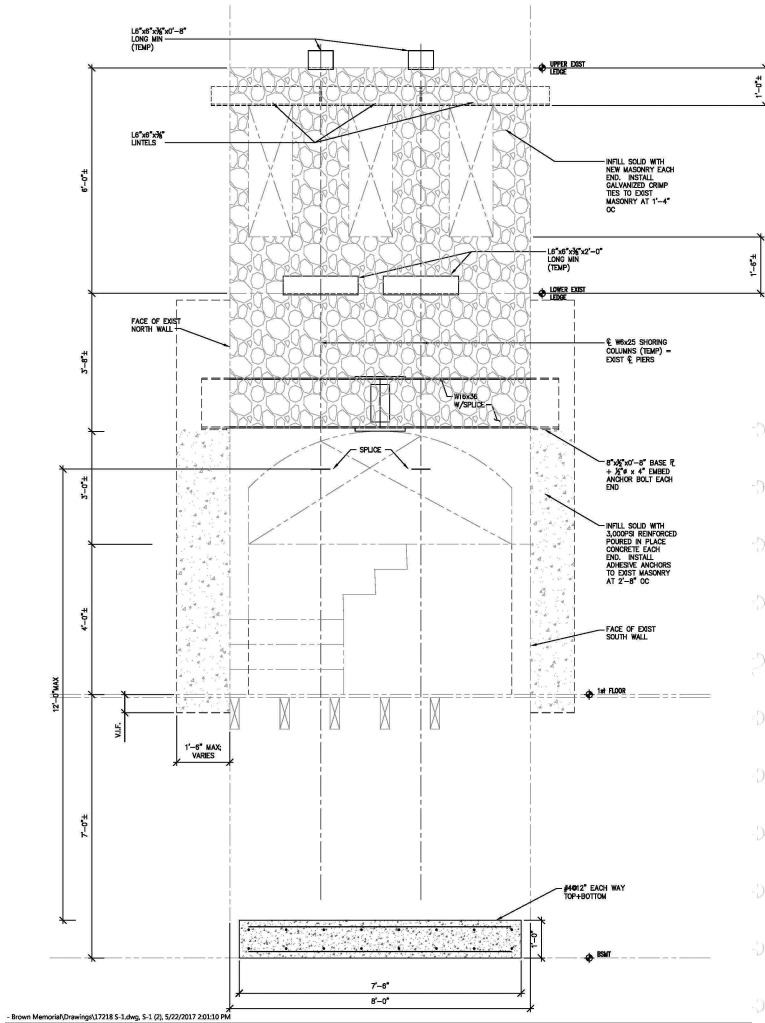
- NURSERY
- YOUTH ROOM
- TUTORING

BROWN MEMORIAL PARK AVENUE PRESBYTERIAN CHURCH

THIRD FLOOR GATHERING SPACE



SOUTH TOWER REPAIRS



ML- 4/26/2017

SUSTAINABILITY / IMPROVED ENERGY EFFICIENCY

LED LIGHTING

HIGH-EFFICIENCY HVAC SYSTEM

REPLACE ALL EXISTING WINDOWS WITH NEW INSULATED, LOW-E COATED WINDOWS

LOW-FLOW PLUMBING FIXTURES

CONSTRUCTION WASTE MANAGEMENT

DURABLE MATERIALS FOR LOW MAINTENANCE AND LONGEVITY

PROJECT SCHEDULE

EXPEDITE SOUTH TOWER REPAIRS:

DESIGN COMPLETE	JUNE 2017
PERMITTING	JULY - AUGUST 2017
START CONSTRUCTION	SEPTEMBER 2017

FELLOWSHIP HALL BUILDING RENOVATIONS:

DESIGN COMPLETE	SEPTEMBER 2017
PERMITTING	OCTOBER - NOVEMBER 2017
START CONSTRUCTION	DECEMBER/JANUARY 2017 (+/-7 Month Construction duration)